

 **BUPI CLEANER**
INDUSTRIAL CLEANING TECHNOLOGY



TABLE OF CONTENTS

Preface Page 5
Close to Nature Page 7
Our History Page 8
What we stand for Page 10
Our range of Products and Services Page 12
BUPI CLEANER® Testing Facility Hallein Page 13
In Harmony with the Environment Page 14
Comprehensive Services Page 16
BUPI CLEANER® **POWERTEC** Series Page 18
BUPI CLEANER® **POWERTEC** BASIC Page 20
BUPI CLEANER® **POWERTEC** PRO Page 22
BUPI CLEANER® **POWERTEC** PREMIUM Page 24
BUPI CLEANER® **POWERTEC** KLT Page 26
BUPI CLEANER® **POWERTEC** RSS Page 30
BUPI CLEANER® **TOPLOADER** Series Page 34
BUPI CLEANER® **TOPLOADER** TL Page 36
BUPI CLEANER® **TOPLOADER** TL-K Page 38
Custom Systems Page 40
Satisfied Customers Page 42
Legal Notice Page 43

”OUR CUSTOMERS RECEIVE
HIGH-QUALITY PRODUCTION
FROM USING DURABLE AND
RELIABLE TECHNOLOGY.“

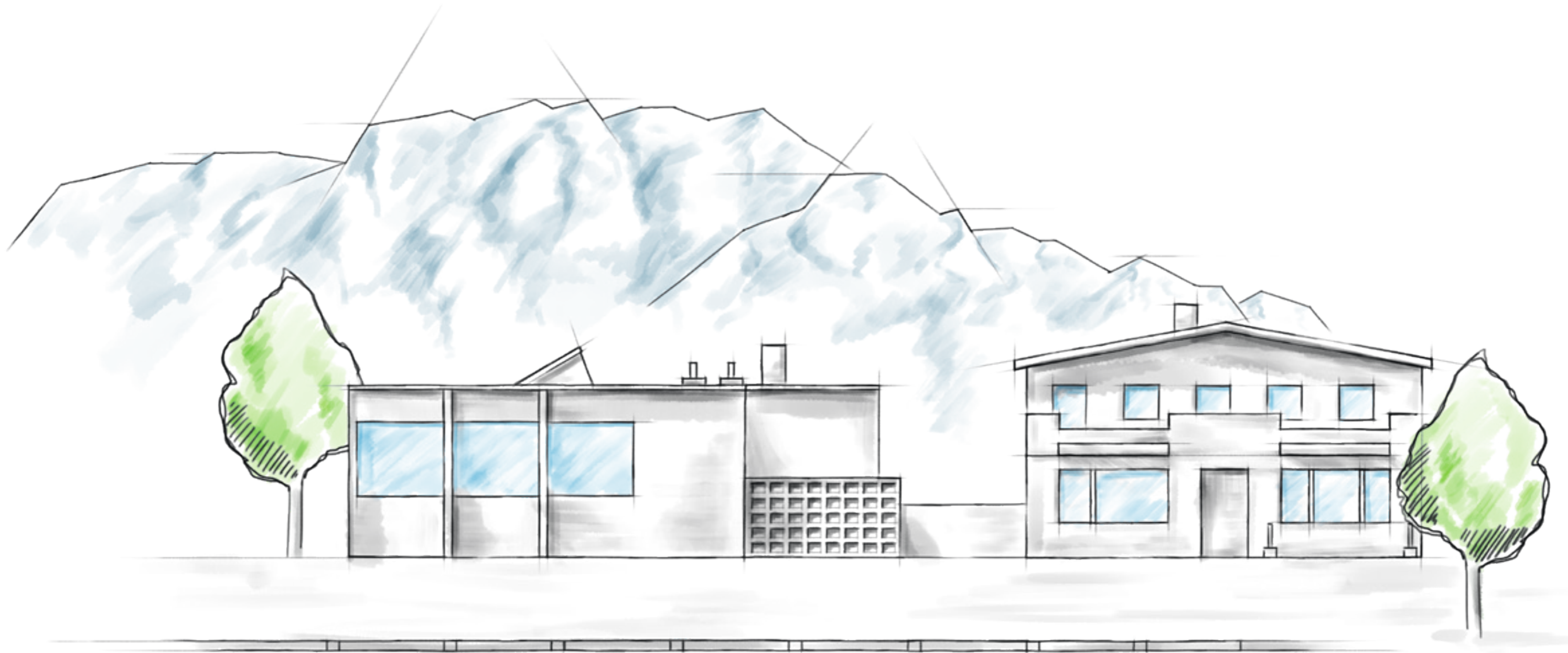


When Mr. Buchegger Pius gave our company its name in the 1950es, he was probably not aware of the fact that he laid the foundation for a sustained path of success.

Today, with an installed base of more than 14,000 systems for industrial parts cleaning on both national and international markets, we are among the leaders of this industry. This achievement did not come upon us out of blue sky but is the result of hard work and continuous improvement and development. We perceive BUPI Golser Maschinenbau GmbH as an innovative Austrian company that has mastered even the most severe economic crises without existence-threatening problems and has in the course of events become a partner to rely upon both for its employees and for its numerous customers. From the very beginning, our cleaning systems have been standing out with longevity, a high production depth and particularly durable material. Some of our systems have been in everyday use for more than 40 years. This provides us with living proof that with our future-oriented technology, we are on the right track. Combined with a high service level and clean solutions individually custom-tailored to specific requirements, we are offering added values in industrial parts cleaning to our customers. We are proud of this and intend to continue following this path of success!

A stylized, handwritten signature in black ink, appearing to read 'M. Golser'.

Markus Golser
Owner/CEO



Where others come to spend their holidays, people at BUPI Golser work in harmony with nature.

Surrounded by idyllic scenery facing magnificent mountain ranges, about 30 BUPI Golser employees design and manufacture about 100 systems per year. We are an Austrian owner-managed family business producing most components of our systems in our own production facility in Hallein near Salzburg. We can therefore almost entirely do without any purchased parts. We have customers in transportation and aerospace as well as manufacturing, automotive and the supplier industry. From the beginning, they have all been relying on our consulting and support as well as the solid quality of our parts cleaning systems.

”OUR SUCCESSES
ARE MAKING US FIT
FOR THE FUTURE.“

1954

**ESTABLISHMENT
OF THE COMPANY**

and commencement of production of
automated cleaning systems for metal parts
and work pieces in Hallein near Salzburg.

1965

**SETTLEMENT
AT THE LOCATION
HALLEIN-REHHOF**

Purchase of a new factory hall about 15 km
south of Salzburg to accommodate the
company's economic development.

1993

BUSINESS TAKEOVER

and continued production of
BUPI CLEANER® cleaning systems by
Golser Maschinenbau GmbH.

2003

NEW MODEL SERIES

BUPI Golser enters the market
of decentralised parts cleaning with a
new and particularly compact model series.

2006

**POWERTEC
GOES INTO PRODUCTION**

The first re-designed
BUPI CLEANER® POWERTEC
system featuring new technology
leaves the factory.

2015

**FACTORY CONVERSION
AND
TECHNICAL CENTRE**

Extensive redesign of the production facility.
BUPI Golser also starts building a technical
centre at the location of Hallein-Rehhof.

- 1985: AWARDED WITH THE
AUSTRIAN NATIONAL PRIZE
- 2001: BUPI GOLSER IS CERTIFIED
SPECIALIST COMPANY IN
ACCORDANCE WITH § 191 WHG
(federal water resources law)
- 2002: AWARDED WITH GOLD FOR
AUSTRIA'S BEST WEBSITE IN THE
AREA OF B2B
- 2004: ISO 9001:2000 CERTIFICATION

”OUR COMPANY’S PHILOSOPHY“

It takes more than a well thought-out concept to remain among the market leaders of industrial parts cleaning for more than 60 years.

It also takes highly-skilled, long-term employees holding up the company’s philosophy and filling it with life day by day. And the flexibility that allows us to pursue future-oriented design work in parallel with day-to-day business. Finally and not least, high quality standards and consciousness of tradition and sustainability can make a company a leader in its field. As in the case of BUPI Golser. As a solid, economically sound and innovative, long-standing family business and partner, we offer our customers the greatest possible degree of reliability on the market, and they reward us with long lasting loyalty that spurs our continuous improvement and development.

Thanks to intensive research and revolutionary technology, our systems set new standards in quality, efficiency and environmental compliance, safeguarding our company’s future success and that of our customers.



”OUR PERFORMANCE IS YOUR SUCCESS.“

As a leading supplier of industrial cleaning systems, BUPI Golser offers a comprehensive portfolio of products and services.

We have the flexibility in production and implementation required to individually customise each of our systems to the requirements of our customers. Be it continuous flow, immersion bath, spray cleaning, metal or small part cleaning systems: A variable, modular system of building blocks allows us to design customer-oriented solutions that invariably combine a stable, low-wear design, high-quality materials and advanced technology. This is the all-encompassing service our long-standing customers have been appreciating for many years.

OUR PORTFOLIO:

- Basic concept: Spray cleaning process with water-based cleaning agents with rotating parts and fix-mounted nozzle piping system
- Full manufacturing depth on our Hallein premises
- Top quality purchased parts from leading suppliers
- Due to BUPI Golser’s high flexibility, innovative designs are incorporated into serial machinery in a short time following thorough testing.
- By using highly efficient Grundfos pumps, BUPI CLEANER® systems are complying with energy efficiency classes IE3/IE4/IE5.
- Electrical and control equipment from Siemens
- Custom-tailored systems technology with building-block
- Configurability
- Plug & play
- Short-term support and spare part availability and
- 10 years spare part availability guarantee




”MORE CONVINCING THAN ANY ARGUMENT AND MORE MEANINGFUL THAN ANY TECHNICAL INFORMATION IS THE PRACTICAL TEST.“

As a new service, BUPI Golser has been offering a perfectly equipped technical centre at the corporate site of Hallein since the autumn of 2017. The permanent availability of many high-tech systems gives interested customers a perfect opportunity to supply their own workpieces to several cleaning processes and permanent tests on site, so they get the experience of the cleaning quality on their own. In this way we support the decision-making security of our international customers for a sustainable investment in quality, reliability and economic efficiency this way, impressively proving our innovation power and active customer orientation.



For further information and appointments with our consultant, visit www.bupicleaner.com/sales-offices





In our company, we strive to protect the most important natural resource, water. Our sophisticated drives are certified to comply with energy efficiency classes IE3/IE4/IE5. Highly efficient Grundfos pumps matching our elevated quality and sustainability standards installed in all our systems have made a significant contribution to this. BUPI CLEANER® systems work without the use of CKW or FCKW as a matter of principle, complying with the company's aim to sustainably reduce environmental impacts as well as disposal costs, so that generations to come can without a care enjoy the landscapes and rivers of the world.

”WATER IS THE
MOST VALUABLE
NATURAL
RESOURCE.“

Longevity, durability and highest quality are the distinctive features of BUPI CLEANER® cleaning systems.

Our company delivers solutions that can be customized to the individual requirements of our customers so they can be implemented using standard systems as well as part or customer specific systems. This is how we achieve optimal cleaning results quickly and cost-effectively. This also requires close relationships with our customers which we maintain from the very start to the results. Our approach is invariably the same: In the beginning, there is comprehensive analysis and consulting to find the best possible solutions that are then of course delivered to schedule. We also offer acceptance tests and initial training for our customers on our Hallein premises. BUPI Golser also takes care of commissioning, operator training and after sales support as well as maintenance. This comprehensive service is a real economic advantage for our customers.

“CUSTOMER
SATISFACTION IS
THE MEASURE
OF ALL THINGS
FOR US.”



BUPI CLEANER® POWERTEC SERIES

The BUPI CLEANER® **POWERTEC** cleaning system series is the all-round solution for a wide range of applications. It is characterised by its exceptionally space-saving, compact design. Parts to clean are loaded from a roller carriage. During the cleaning process, the parts are rotated on a turntable in the cleaning chamber while they are sprayed on from three sides with a hot cleaning agent at high pressure and flow rates.

By selecting and combining the appropriate standard options, the cleaning process can be ideally adapted to your cleaning requirement.

BUPI CLEANER® **POWERTEC** is available with one, two or three cleaning and rinsing circuits.

Parts enter the system through a lifting gate, a hinged lid or a horizontal sliding door.

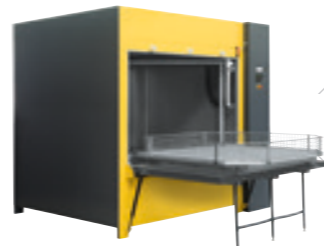
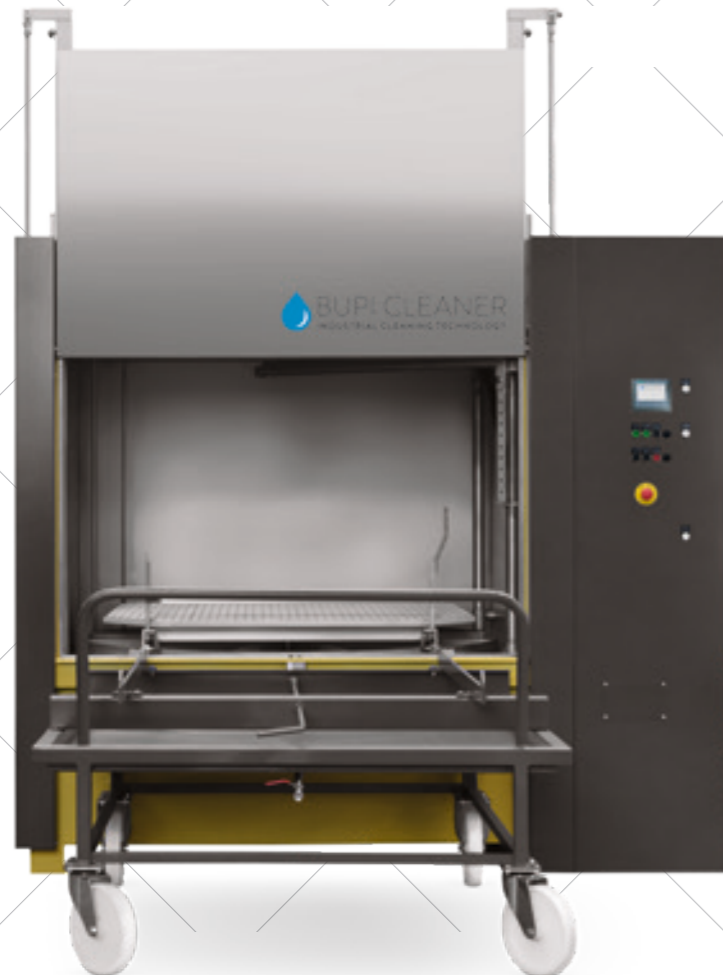


- Spray cleaning system for water-based cleaning agents available with 1, 2 or 3 cleaning circuits
- Space-saving
- Eco-friendly
- Rugged design
- Reliable and long-lived
- Low costs for purchase and operation
- Highly efficient and powerful Grundfos pumps IE3/IE4/IE5
- Electrical and control equipment from Siemens
- All components in contact with fluid in stainless steel
- Return line filtration



BUPI CLEANER® POWERTEC BASIC

SINGLE TANK CLEANING SYSTEM WITH LIFTING GATE OR HINGED LID



MAIN APPLICATION AREAS:

- Maintenance organisations
- Repair shops
- Intermediate cleaning steps
- Automotive
- Construction machinery industry

EQUIPMENT CHARACTERISTICS:

- Single tank cleaning system
- Highly efficient and powerful Grundfos pump IE3/IE4/IE5
- All components in contact with fluid in stainless steel
- Return line filtration
- Siemens Safety S7-1200F controller with a KTP 400 colour display and push buttons
- Screwed flat jet nozzles

RECOMMENDED ACCESSORIES:

- Vapour extraction unit
- Level control with 3-rod level electrodes
- Three-phase oil separator

BUPI CLEANER® POWERTEC BASIC

SINGLE TANK CLEANING SYSTEM WITH LIFTING GATE OR HINGED LID

OVERALL DIMENSIONS APPROX. (WITHOUT ADDITIONAL EQUIPMENT)	SIZE 3	SIZE 4	SIZE 5	SIZE 7
Width	1,730 mm	2,000 mm	2,350 mm	2,900 mm
Depth	1,345 mm	1,600 mm	1,930 mm	2,470 mm
Total depth with extended roller carriage	2,210 mm	2,530 mm	3,120 mm	3,935 mm
Total height	1,990 mm	1,990 mm	2,140 mm	2,250 mm
Total height with open loading gate	2,550 mm	2,550 mm	2,900 mm	3,200 mm
Transfer height (upper edge grating)	780 mm	780 mm	780 mm	815 mm
Effective height (from upper edge roller carriage)	700 mm	700 mm	900 mm	1,000 mm
Grating – square, with bevelled outer corners	900 mm	1,060 mm	1,400 mm	1,700 mm
Grating – diagonal between bevelled corners	1,080 mm	1,335 mm	1,670 mm	2,250 mm
Load weight (payload) standard	700 kg	900 kg	1,200 kg	1,500 kg
Load weight (payload) max.	1,500 kg	1,500 kg	2,500 kg	3,000 kg
Total system weight	770 kg	900 kg	1,100 kg	1,500 kg

POWER SUPPLY (WITHOUT ADDITIONAL EQUIPMENT)	SIZE 3	SIZE 4	SIZE 5	SIZE 7
Voltage (three-phase)	400 V	400 V	400 V	400 V
Frequency	50 Hz	50 Hz	50 Hz	50 Hz
Control voltage	24 VDC	24 VDC	24 VDC	24 VDC
Installed load	14 kW	20 kW	24 kW	40 kW
Maximum current drain	20 A	28 A	35 A	58 A

SPRAY CLEANING SYSTEM – CLEANING	SIZE 3	SIZE 4	SIZE 5	SIZE 7
Spray pressure at the nozzles	4.6 bar	4.6 bar	5.0 bar	5.8 bar
Number of mounted flat jet nozzles	52 pcs.	58 pcs.	74 pcs.	95 pcs.

PUMP DATA – CLEANING	SIZE 3	SIZE 4	SIZE 5	SIZE 7
Circulation rate	15.8 m³/h	15.8 m³/h	21 m³/h	29.2 m³/h
Pumping head in mWS	47.0 mWS	47.0 mWS	50.7 mWS	58.5 mWS
Pumping head in kPa	470 kPa	470 kPa	507 kPa	585 kPa
Pump motor	4 kW	4 kW	7.5 kW	7.5 kW

ELECTRIC HEATER – CLEANING	SIZE 3	SIZE 4	SIZE 5	SIZE 7
Capacity tank	250 l	340 l	500 l	720 l
Power electric heaters	9.0 kW	15.0 kW	18.0 kW	31.5 kW
Treatment temperature adjustable	0–80° C	0–80° C	0–80° C	0–80° C
Warm-up period of the tank from 15 to 70° C	approx. 2 hours	approx. 2 hours	approx. 2 hours	approx. 2 hours



For further information, visit www.bupicleaner.com



BUPI CLEANER® POWERTEC PRO

TWO-TANK CLEANING SYSTEM WITH LIFTING GATE OR HINGED LID



MAIN APPLICATION AREAS:

- Automotive
- Suppliers
- Paint preparation
- Engine production
- Gear making

EQUIPMENT CHARACTERISTICS:

- Two-tank cleaning system
- Highly efficient and powerful Grundfos pumps IE3/IE4/IE5
- All components in contact with fluid in stainless steel
- Return line filtration
- Siemens Safety S7-1200F controller with a KTP 400 colour display and push buttons
- Screwed flat jet nozzles

RECOMMENDED ACCESSORIES:

- Vapour extraction unit
- Level control with float switch
- Maintenance lids
- Dosing unit mechanical
- Three-phase oil separator
- Cascading control PRO
- TP 700 colour display with push buttons

BUPI CLEANER® POWERTEC PRO

TWO-TANK CLEANING SYSTEM WITH LIFTING GATE OR HINGED LID

OVERALL DIMENSIONS APPROX. (WITHOUT ADDITIONAL EQUIPMENT)	SIZE 3	SIZE 4	SIZE 5	SIZE 7
Width	1,930 mm	2,200 mm	2,550 mm	3,100 mm
Depth	1,345 mm	1,600 mm	1,930 mm	2,470 mm
Total depth with extended roller carriage	2,210 mm	2,530 mm	3,120 mm	3,935 mm
Total height	2,075 mm	2,075 mm	2,235 mm	2,410 mm
Total height with open loading gate	2,685 mm	2,685 mm	3,100 mm	3,360 mm
Transfer height (upper edge grating)	865 mm	875 mm	875 mm	925 mm
Effective height (from upper edge roller carriage)	700 mm	700 mm	900 mm	1,000 mm
Grating – square, with bevelled outer corners	900 mm	1,060 mm	1,400 mm	1,700 mm
Grating – diagonal between bevelled corners	1,080 mm	1,335 mm	1,670 mm	2,250 mm
Load weight (payload) standard	700 kg	900 kg	1,200 kg	1,500 kg
Load weight (payload) max.	1,500 kg	1,500 kg	2,500 kg	3,000 kg
Total system weight	900 kg	1,100 kg	1,700 kg	2,000 kg

POWER SUPPLY (WITHOUT ADDITIONAL EQUIPMENT)	SIZE 3	SIZE 4	SIZE 5	SIZE 7
Voltage (three-phase)	400 V	400 V	400 V	400 V
Frequency	50 Hz	50 Hz	50 Hz	50 Hz
Control voltage	24 VDC	24 VDC	24 VDC	24 VDC
Installed load	25 kW	37 kW	46 kW	75 kW
Maximum current drain	36 A	53 A	67 A	109 A

SPRAY CLEANING SYSTEM – CLEANING/RINSING	SIZE 3	SIZE 4	SIZE 5	SIZE 7
Spray pressure at the nozzles	4.6/4.2 bar	4.6/4.2 bar	5.0/4.8 bar	5.8/4.4 bar
Number of mounted flat jet nozzles	52/42 pcs.	58/42 pcs.	74/52 pcs.	95/77 pcs.

PUMP DATA – CLEANING/RINSING	SIZE 3	SIZE 4	SIZE 5	SIZE 7
Circulation rate	15.8/11.2 m³/h	15.8/11.2 m³/h	21/14.7 m³/h	29.2/16.9 m³/h
Pumping head in mWS	47.0/43.0 mWS	47.0/43.0 mWS	50.7/48.5 mWS	58.5/45.0 mWS
Pumping head in kPa	470/430 kPa	470/430 kPa	507/485 kPa	585/450 kPa
Pump motor	4.0/2.2 kW	4.0/2.2 kW	5.5/4.0 kW	7.5/4.0 kW

ELECTRIC HEATER – CLEANING/RINSING	SIZE 3	SIZE 4	SIZE 5	SIZE 7
Capacity tanks	250/250 l	340/340 l	500/500 l	800/800 l
Power electric heaters	9.0/9.0 kW	15.0/15.0 kW	18.0/18.0 kW	31.5/31.5 kW
Treatment temperature adjustable	0–80° C	0–80° C	0–80° C	0–80° C
Warm-up period of the tanks from 15 to 70° C	approx. 2 hours	approx. 2 hours	approx. 2 hours	approx. 2 hours



For further information, visit www.bupicleaner.com



BUPI CLEANER® POWERTEC PREMIUM

THREE-TANK CLEANING SYSTEM WITH LIFTING GATE OR HINGED LID



MAIN APPLICATION AREAS:

- Automotive
- Medical technology
- Fine cleaning
- Traffic technology industry
- Aerospace industry

EQUIPMENT CHARACTERISTICS:

- Three-tank cleaning system
- Highly efficient and powerful Grundfos pumps IE3/IE4/IE5
- Siemens Safety S7-1200F controller with KTP 400 colour display and push buttons
- All components in contact with fluid in stainless steel
- Return line filtration
- Screwed flat jet nozzles

RECOMMENDED ACCESSORIES:

- Vapour extraction unit
- Level control with tuning fork switch
- Maintenance lids
- Dosing unit electrical
- Three-phase oil separator
- Cascading control PREMIUM
- Micro filter in the pressure line
- Hot-air dryer
- Viewing window and system lighting
- TP 700 colour display with push buttons

BUPI CLEANER® POWERTEC PREMIUM

THREE-TANK CLEANING SYSTEM WITH LIFTING GATE OR HINGED LID

OVERALL DIMENSIONS APPROX. (WITHOUT ADDITIONAL EQUIPMENT)	SIZE 3	SIZE 4	SIZE 5	SIZE 7
Width	1,930 mm	2,200 mm	2,550 mm	3,100 mm
Depth	1,770 mm	2,010 mm	2,475 mm	3,145 mm
Total depth with extended roller carriage	2,635 mm	2,930 mm	3,665 mm	4,610 mm
Total height	2,075 mm	2,075 mm	2,235 mm	2,410 mm
Total height with open loading gate	2,685 mm	2,685 mm	3,100 mm	3,360 mm
Transfer height (upper edge grating)	865 mm	875 mm	875 mm	925 mm
Effective height (from upper edge roller carriage)	700 mm	700 mm	900 mm	1,000 mm
Grating – square, with bevelled outer corners	900 mm	1,060 mm	1,400 mm	1,700 mm
Grating – diagonal between bevelled corners	1,080 mm	1,335 mm	1,670 mm	2,250 mm
Load weight (payload) standard	700 kg	900 kg	1,200 kg	1,500 kg
Load weight (payload) max.	1,500 kg	1,500 kg	2,500 kg	3,000 kg
Total system weight	1,200 kg	1,400 kg	2,100 kg	2,500 kg

POWER SUPPLY (WITHOUT ADDITIONAL EQUIPMENT)	SIZE 3	SIZE 4	SIZE 5	SIZE 7
Voltage (three-phase)	400 V	400 V	400 V	400 V
Frequency	50 Hz	50 Hz	50 Hz	50 Hz
Control voltage	24 VDC	24 VDC	24 VDC	24 VDC
Installed load	32 kW	47 kW	59 kW	91 kW
Maximum current drain	47 A	68 A	95 A	132 A

SPRAY CLEANING SYSTEM – CLEANING/RINSING/FINAL RINSE	SIZE 3	SIZE 4	SIZE 5	SIZE 7
Spray pressure at the nozzles	4.6/4.2/2.7 bar	4.6/4.2/2.7 bar	5.0/4.8/2.9 bar	5.8/4.4/2.7 bar
Number of mounted flat jet nozzles	52/42/23 pcs.	58/42/25 pcs.	74/52/33 pcs.	95/77/39 pcs.

PUMP DATA – CLEANING/RINSING/FINAL RINSE	SIZE 3	SIZE 4	SIZE 5	SIZE 7
Circulation rate	15.8/11.2/2.31 m³/h	15.8/11.2/2.31 m³/h	21/14.7/3.56 m³/h	29.2/16.9/4.07 m³/h
Pumping head in mWS	47.0/43.0/27.2 mWS	47.0/43.0/27.2 mWS	50.7/48.5/29.1 mWS	57.5/45.0/27.9 mWS
Pumping head in kPa	470/430/272 kPa	470/430/272 kPa	507/485/291 kPa	575/450/279 kPa
Pump motor	4.0/2.2/0.37 kW	4.0/2.2/0.37 kW	5.5/4.0/0.75 kW	7.5/4.0/0.75 kW

ELECTRIC HEATER – CLEANING/RINSING/FINAL RINSE	SIZE 3	SIZE 4	SIZE 5	SIZE 7
Capacity tanks	250/250/180 l	340/340/220 l	500/500/340 l	800/800/400 l
Power electric heaters	9.0/9.0/6.0 kW	15.0/15.0/9.0 kW	18.0/18.0/12.0 kW	31.5/31.5/15.0 kW
Treatment temperature adjustable	0–80° C	0–80° C	0–80° C	0–80° C
Warm-up period of the tanks from 15 to 70° C	approx. 2 hours	approx. 2 hours	approx. 2 hours	approx. 2 hours



For further information, visit www.bupicleaner.com



BUPI CLEANER® POWERTEC KLT

The BUPI CLEANER® POWERTEC KLT cleaning system series is characterised by its exceptionally space-saving, compact design and its simple handling. The small load carriers (Kleinladungsträger; KLT) are pushed into the cleaning cage by hand.

During the cleaning process, the containers rotate horizontally in the cleaning chamber. They are sprayed on from three sides with a hot cleaning agent at high pressure and flow rates, then rinsed and finally blow-dried with hot air.

For loading or unloading of cages in parallel with a cleaning process, loading and unloading of the cleaning system can be prepared using several feeder carts. This nearly doubles the system's capacity.



- Two-tank spray cleaning system for water-based cleaning agents
- For cleaning transport and small load containers (KLT)
- Container cleaning from the smallest boxes to standard palette cages
- Space-saving
- Eco-friendly
- Rugged design
- Reliable and long-lived
- Flexible spatial configuration with height-adjustable, removable shelves
- Integrated hot-air dryer
- Small footprint (2.7 x 2.3 m)
- Low costs for purchase and operation
- Highly efficient and powerful Grundfos pumps IE3/IE4/IE5
- Electrical and control equipment from Siemens
- All components in contact with fluid in stainless steel
- Return line filtration



BUPI CLEANER® POWERTEC KLT PRO

TWO-TANK CLEANING SYSTEM WITH LIFTING GATE



MAIN APPLICATION AREAS:

- Automotive
- Fine cleaning
- Medical technology
- Electrical industry
- Gear making

EQUIPMENT CHARACTERISTICS:

- Two-tank cleaning system
- Highly efficient and powerful Grundfos pumps IE3/IE4/IE5
- All components in contact with fluid in stainless steel
- Return line filtration
- Siemens Safety S7-1200F controller with KTP 400 colour display and push buttons

RECOMMENDED ACCESSORIES:

- Vapour extraction unit
- Level control with float switch
- Maintenance lids
- Dosing unit mechanical
- Three-phase oil separator
- Cascading control PRO
- Integrated hot-air dryer
- KLT-goods basket and shelves
- Fine filter in the pressure line

BUPI CLEANER® POWERTEC KLT PRO

TWO-TANK CLEANING SYSTEM WITH LIFTING GATE

OVERALL DIMENSIONS APPROX. (WITHOUT ADDITIONAL EQUIPMENT) SIZE 5

Width	2,720 mm
Depth	2,250 mm
Total height	2,950 mm
Total height with open loading gate	3,900 mm
Transfer height (upper edge grating)	880 mm
Usable dimensions L x W x H	1,220 x 1,000 x 1,200 mm
Load weight (payload) standard	200 kg
Load weight (payload) max.	300 kg
Total system weight	1,900 kg

POWER SUPPLY (WITHOUT ADDITIONAL EQUIPMENT)

Voltage (three-phase)	400 V
Frequency	50 Hz
Control voltage	24 VDC
Installed load	49 kW
Maximum current drain	71 A

SPRAY CLEANING SYSTEM - CLEANING/RINSING

Spray pressure at the nozzles	5.0/4.8 bar
Number of mounted full jet nozzles	125/125 pcs.

PUMP DATA - CLEANING/RINSING

Circulation rate	35.3/32.3 m³/h
Pumping head in mWS	52.0/42.0 mWS
Pumping head in kPa	520/420 kPa
Pump motor	7.5/5.5 kW

ELECTRIC HEATER - CLEANING/RINSING

Capacity tanks	550/550 l
Power electric heaters	18/18 kW
Treatment temperature adjustable	0-80° C
Warm-up period of the tanks from 15 to 70° C	approx. 2 hours



For further information, visit
www.bupicleaner.com



BUPI CLEANER® POWERTEC RSS

CLEANING SYSTEMS FOR BULK MATERIAL AND LARGE PARTS

The BUPI CLEANER® POWERTEC RSS cleaning system is characterised by its exceptionally space-saving, compact design and its simple handling. The large parts to clean are loaded into the cleaning chamber by hand or automated. Depending on your request, the system can also be fully automated.

During the cleaning process, the palette cages or Euro palettes rotate horizontally in the cleaning chamber. They are sprayed on from three sides with a hot cleaning agent at high pressure and flow rates and then rinsed.

For loading or unloading of cages in parallel with a cleaning process, loading and unloading of the cleaning system can be prepared using several feeder carts. This nearly doubles the system's capacity.



- Spray cleaning system for water-based cleaning agents available with 1 or 2 cleaning circuits
- For cleaning bulk material and large parts
- Container cleaning from small boxes to standard Euro palettes or palette cages
- Space-saving
- Eco-friendly
- Rugged design
- Reliable and long-lived
- Low costs for purchase and operation
- Highly efficient and powerful Grundfos pumps IE3/IE4/IE5
- Electrical and control equipment from Siemens
- All components in contact with fluid in stainless steel
- Return line filtration



BUPI CLEANER® POWERTEC RSS

SINGLE TANK OR TWO-TANK CLEANING SYSTEM WITH LIFTING GATE



MAIN APPLICATION AREAS:

- Automotive
- Electrical industry
- Sheet metal forming industry
- Hardening shops

EQUIPMENT CHARACTERISTICS:

- One-tank or two-tank cleaning system
- Highly efficient and powerful Grundfos pump(s) IE3/IE4/IE5
- All components in contact with fluid in stainless steel
- Return line filtration
- Manual basket locking
- Siemens Safety S7-1200F controller with KTP 400 colour display and push buttons

RECOMMENDED ACCESSORIES (PRO):

- Vapour extraction unit
- Level control with float switch
- Maintenance lids
- Dosing unit mechanical
- Three-phase oil separator
- Cascading control PRO
- Micro filter in the pressure line

BUPI CLEANER® POWERTEC RSS BASIC

SINGLE TANK CLEANING SYSTEM WITH LIFTING GATE

OVERALL DIMENSIONS APPROX. (WITHOUT ADDITIONAL EQUIPMENT)	SIZE 5
Width	2,500 mm
Depth	1,930 mm
Total height	2,550 mm
Total height with open loading gate	3,850 mm
Transfer height (upper edge grating)	1,000 mm
Usable dimensions L x W x H	1,200 x 800 x 1,000 mm
Load weight (payload) standard	1,000 kg
Load weight (payload) max.	1,500 kg
Total system weight	1,400 kg

POWER SUPPLY (WITHOUT ADDITIONAL EQUIPMENT)	
Voltage (three-phase)	400 V
Frequency	50 Hz
Control voltage	24 VDC
Installed load	15 kW
Maximum current drain	22 A

SPRAY SYSTEM – CLEANING	
Spray pressure at the nozzles	5.5 bar
Number of mounted full jet nozzles	106 pcs.

PUMP DATA – CLEANING	
Circulation rate	33.2 m³/h
Pumping head in mWS	55.8 mWS
Pumping head in kPa	558 kPa
Pump motor	7.5 kW

ELECTRIC HEATER – CLEANING	
Capacity tank	500 l
Power electric heaters	18 kW
Treatment temperature adjustable	0–80° C
Warm-up period of the tank from 15 to 70° C	approx. 2 hours

BUPI CLEANER® POWERTEC RSS PRO

TWO-TANK CLEANING SYSTEM WITH LIFTING GATE

OVERALL DIMENSIONS APPROX. (WITHOUT ADDITIONAL EQUIPMENT)	SIZE 5
Width	2,750 mm
Depth	1,930 mm
Total height	2,550 mm
Total height with open loading gate	3,850 mm
Transfer height (upper edge grating)	1,000 mm
Usable dimensions L x W x H	1,200 x 800 x 1,000 mm
Load weight (payload) standard	1,000 kg
Load weight (payload) max.	1,500 kg
Total system weight	1,700 kg

POWER SUPPLY (WITHOUT ADDITIONAL EQUIPMENT)	
Voltage (three-phase)	400 V
Frequency	50 Hz
Control voltage	24 VDC
Installed load	49 kW
Maximum current drain	71 A

SPRAY SYSTEM – CLEANING/RINSING	
Spray pressure at the nozzles	5.5/3.5 bar
Number of mounted full jet nozzles	106/106 pcs.

PUMP DATA – CLEANING/RINSING	
Circulation rate	33.2/26.7 m³/h
Pumping head in mWS	55.8/35.7 mWS
Pumping head in kPa	558/357 kPa
Pump motor	7.5/5.5 kW

ELECTRIC HEATER – CLEANING/RINSING	
Capacity tanks	500/500 l
Power electric heaters	18/18 kW
Treatment temperature adjustable	0–80° C
Warm-up period of the tanks from 15 to 70° C	approx. 2 hours



For further information, visit
www.bupicleaner.com



BUPI CLEANER® TOPLOADER SERIES

The BUPI CLEANER® TOPLOADER systems were specifically designed as workplace implements for industrial part cleaning in production and maintenance applications.

With all components in contact with fluid made of stainless steel, these stable, rugged systems are a cost-effective cleaning solution for single part and low volume serial production.

As systems utilizing spray-cleaning with water-based cleaning agents, they are based upon the time-tested BUPI CLEANER® technology concept with rotating parts to clean and a stationary nozzle pipe system, delivering outstanding cleaning results. The broad product range with numerous options excels with simple operation and delivers top values of heating power, loading capacity and reliability.

Depending on your request, the system can be equipped with hot-air dryer, micro filter in the pressure line, eco rinsing device, three-phase oil separator, dosing unit mechanical, level control and vapour extraction unit.



- Spray cleaning system for water-based cleaning agents
- Simple operation
- Space-saving
- Eco-friendly
- Rugged design
- Reliable and long-lived
- Low costs for purchase and operation
- Highly efficient and powerful Grundfos pump IE3/IE4
- Electrical and control equipment from Siemens
- All components in contact with fluid in stainless steel



BUPI CLEANER® TOPLOADER TL



BUPI CLEANER® TOPLOADER TL

OVERALL DIMENSIONS APPROX. (WITHOUT ADDITIONAL EQUIPMENT)	TL 80	TL 100	TL 120
Wire basket, round	800 mm	1,000 mm	1,200 mm
Usable height	450 mm	500 mm	700 mm
Width	1,120 mm	1,320 mm	1,520 mm
Depth	920 mm	1,120 mm	1,320 mm
Height with closed lid	1,000 mm	1,200 mm	1,400 mm
Payload	200 kg	250 kg	350 kg
Capacity tank	135 l	300 l	430 l
Spray pressure at the nozzles	3.0 bar	3.5 bar	3.5 bar
Circulation rate	4.8 m³/h	12 m³/h	12 m³/h
Pump motor	0.85 kW	2.2 kW	2.2 kW
Power electric heater	4.5 kW	6.0 kW	9.0 kW
Installed load	6.0 kW	8.5 kW	11.5 kW
Maximum current drain	10.0 A	14.5 A	20.5 A
Treatment temperature adjustable	0–85° C	0–85° C	0–85° C
Warm-up period tank from 15 to 70° C	approx. 1.5 hours	approx. 2 hours	approx. 2 hours



MAIN APPLICATION AREAS:

- Maintenance organisations
- Repair shops
- Intermediate cleaning steps

Workplace implement



EQUIPMENT CHARACTERISTICS:

- All components in contact with fluid in stainless steel
- **Vertically** rotating cage
- Motor-driven cleaning cage
- High loading capacity (max. payload 350 kg)
- Siemens electrical equipment with Siemens Logo control
- Highly efficient and powerful Grundfos pump IE3/IE4
- Dry running protection
- Tank cover



For further information, visit www.bupicleaner.com



BUPI CLEANER® TOPLOADER TL-K



BUPI CLEANER® TOPLOADER TL-K

OVERALL DIMENSIONS APPROX. (WITHOUT ADDITIONAL EQUIPMENT)	TL 80 K
Cleaning cage dimensions	471 x 321 x 200 mm
Width	1,220 mm
Depth	860 mm
Height with closed lid	1,030 mm
Payload	50 kg
Capacity tank	165 l
Spray pressure at the nozzles	3.2 bar
Circulation rate	12 m³/h
Pump motor	2.8 kW
Power electric heater	6.0 kW
Installed load	8.9 kW
Maximum current drain	10.5 A
Treatment temperature adjustable	0–85° C
Warm-up period of the tank from 15 to 70° C	approx. 1.5 hours



MAIN APPLICATION AREAS:

- Bulk material
- Maintenance organisations
- Repair shops
- Intermediate cleaning steps

Workplace implement



EQUIPMENT CHARACTERISTICS:

- All components in contact with fluid in stainless steel
- **Horizontally** rotating, lockable basket holder
- Motor-driven cleaning cage
- Siemens electrical equipment with Siemens Logo control
- Highly efficient and powerful Grundfos pump IE3/IE4
- Dry running protection
- Tank cover



For further information, visit www.bupicleaner.com



“THE SYSTEM ADAPTS TO ITS USERS, AND NOT THE OTHER WAY ROUND.”

With rugged, space-saving and highly efficient cleaning systems BUPI Golser became one of the most successful businesses in the field of industrial part and container cleaning. BUPI Golser owes a substantial part of this success to its ability to individually adapt these systems to customers' specific requirements and operational necessities.

BUPI Golser standard cleaning systems are available in numerous equipment configurations. Accessories and options from a comprehensive catalogue can make each BUPI CLEANER® cleaning system an individual solution perfectly suited to the task at hand at serial costs.

FULL INDIVIDUALITY

Quite frequently, requirements are so individual they require changes to central parts of the system. This is why nearly 50 percent of all BUPI CLEANER® systems are custom solutions. Their common denominator is the spray cleaning process using water-based cleaning agents. Aside of this, anything is possible.

CERTAINLY THOROUGH – THOROUGHLY CERTAIN

The system including all components used is designed and verified as one comprehensive project. Whether cleaning of big parts calls for an extended cleaning chamber or an increased load-bearing capacity or particular contaminations make a higher medium pressure necessary. For each industrial use case, this is how BUPI Golser engineers assure that all parts are fit to take on the specific load, as the example of a system shows where cylinder blocks for large Diesel engines weighing 6.5 tons each rotate about a horizontal axis during cleaning.

ROOM WHERE THERE IS NO ROOM

Frequently, lack of factory floor space prompts custom designs. In many cases, floor space available is hardly larger than the base of the cleaning chamber. Upstream and downstream processes also regularly cause special installation situations such as the one in a plant for reprocessing wheel sets for railway vehicles that are fed to the cleaning system at a given height and direction.

AUTOMATION USING INLINE CLEANING

Usually in the form of continuous flow systems, custom designs combine the established cleaning process with conveyor systems for the transport of the parts to clean to and from the cleaning chamber. These installations range from belt or roller conveyors to overhead monorail systems. The control system flexibly reacts to the availability of parts to clean and sends status information to downstream plant and to higher-level systems.

BUPI Golser provides custom solutions not only in the form of new systems. Sometimes, adaptation of the long-lived systems to changed requirements is the most economically viable solution. It is also available from the system's makers. With full guarantee.



For case studies of satisfied customers, visit www.bupicleaner.com



”OUR CUSTOMERS CAN ALWAYS COUNT ON US.“

We are rather proud of our work and all the more happy if the result of our work fully satisfies our customers. Renowned customers already enjoying the benefits of our cleaning systems speak for themselves and for the high quality of our systems.

Some of our customers already trusting in our services:



”Cleaning cycles were reduced by about one third. The process was unified, big and small parts now receive equal treatment, entirely in the closed cleaning chamber.“

POWER-HYDRAULIK GmbH

”The claim of our traction components to combine top efficiency with indestructible quality is similarly fulfilled by the BUPI CLEANER® POWERTEC. This is why this product of Austrian engineering is our first choice for parts cleaning.“

Traktionssysteme Austria GmbH

”... The sliding loading door normally opens vertically. Due to a low ceiling, this was not practicable. This is where the flexibility of the small-sized manufacturer managed by its owner came into play. At short notice, BUPI Golser implemented a customised solution with a horizontally opening loading gate. To facilitate optimal system utilization and high throughput, an automated feeder subsystem was added. It allows baskets to be loaded at a convenient and efficient working height during ongoing cleaning operations with the other basket in the machine. The plant has been in operation since January of 2011, and that is how long it has been working without any issues.“

APF Produktionsdienstleistungs GmbH

LEGAL NOTICE

PUBLISHER and responsible for all contents:
BUPI Golser Maschinenbau GmbH
Altengutrathstraße 31-33, 5400 Hallein/Austria
office@bupicleaner.com
www.bupicleaner.com

COPYWRITING:
PeterKemptnerMachtMarketing® GmbH,
Lunik2 Marketing Services GmbH

CONCEPT, DESIGN AND ILLUSTRATIONS:
Lunik2 Marketing Services GmbH

IMAGES:
BUPI Golser Maschinenbau GmbH,
Mag. (FH) Tom Beyr/LEFTHAND-PRODUCTIONS,
Monty Rakusen/Cultura,
Thomas Aichinger/imagebroker/ AustrianImages.com

Subject to change without notice.